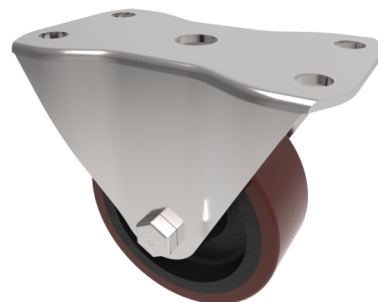


Polyurethane Cast Iron Plate Fixed Castor 75mm 125kg Load

Product code: BZHF75PTBJ

Pressed steel fixed castor with a top plate fixing fitted with a polyurethane wheel on a cast iron centre with ball bearings. Wheel diameter 75mm, tread width 40mm, overall height 95mm, top plate 102mm x 64mm, hole centres 80mm/83mm x 35mm. Load capacity 125kg.



Diameter (mm)	75
Castor Type	Fixed
Fixing Option	Plate
Height (mm)	95
Wheel Material	Polyurethane on Cast Iron
Colour / Shore Hardness	Brown Polyurethane on Cast Iron Rim / 94 Shore A
Temperature Resistance	-20 °C TO +80 °C
Bearing Type	Ball
Load Capacity (kg)	125
Tread (mm)	40
Plate Size (mm)	102 x 64
Hole Centres (mm)	80/83 x 35
Top Plate Thickness (mm)	2.5
Fork Thickness (mm)	2.5
To Suit Fixing Bolt (mm)	8

BIL GROUP LTD

Porte Marsh Road, Calne, Wiltshire, SN11 9BW

Registered in England No: 2603821

VAT Reg: GB572705729

