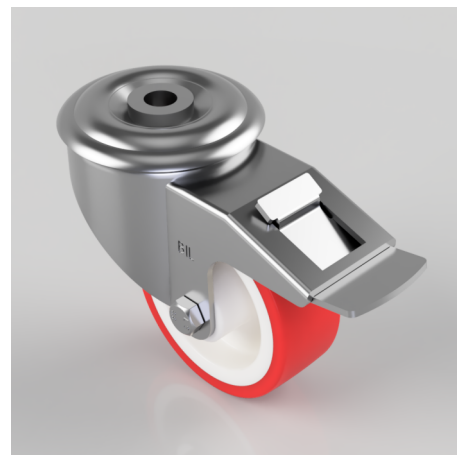


## Polyurethane Nylon Bolt Hole Swivel Castor Brake 80mm 150kg Load

**Product code: BZMM80NPBH12SWB**

Pressed steel swivel castor with a 12mm bolt hole fixing fitted with a red polyurethane tyre on white nylon centred wheel with a plain bore and total lock brake. Wheel diameter 80mm, tread width 25mm, overall height 105mm. Load capacity 150kg.



Diameter (mm)	80
Castor Type	Swivel with Total Lock Brake
Fixing Option	Bolt Hole
Height (mm)	105
Wheel Material	Polyurethane on Nylon
Colour / Shore Hardness	Red Polyurethane on Nylon Rim / 96 Shore A
Temperature Resistance	-20 °C TO +70 °C
Bearing Type	Plain
Load Capacity (kg)	150
Tread (mm)	30
Swivel Radius (mm)	112
Head Dia (mm)	76
Fork Thickness (mm)	2
To Suit Fixing Bolt (mm)	12

## BIL GROUP LTD

Porte Marsh Road, Calne, Wiltshire, SN11 9BW

Registered in England No: 2603821

VAT Reg: GB572705729

