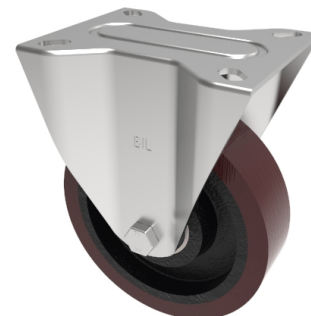


Polyurethane Cast Iron Plate Fixed Castor 150mm 350kg Load

Product code: BZMMF150PTBJ

Pressed steel fixed castor with a top plate fixing fitted with a brown polyurethane cast iron centred wheel with ball bearings .Wheel diameter 150mm, tread width 50mm, overall height 190mm, top plate 140mm x 110mm, hole centres 105mm x 80mm/75mm. Load capacity 350kg.



Diameter (mm)	150
Castor Type	Fixed
Fixing Option	Plate
Height (mm)	190
Wheel Material	Polyurethane on Cast Iron
Colour / Shore Hardness	Brown Polyurethane on Cast Iron Rim / 94 Shore A
Temperature Resistance	-20 °C TO +80 °C
Bearing Type	Ball
Load Capacity (kg)	350
Tread (mm)	50
Plate Size (mm)	140 x 110
Hole Centres (mm)	105 x 80/75
Top Plate Thickness (mm)	3
Fork Thickness (mm)	3
To Suit Fixing Bolt (mm)	10

BIL GROUP LTD

Porte Marsh Road, Calne, Wiltshire, SN11 9BW

Registered in England No: 2603821

VAT Reg: GB572705729

