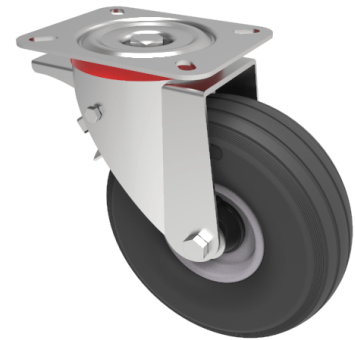


## Pneumatic wheel Plate Swivel Castor Brake 200mm 75kg Load

**Product code: BZPC200MRBSWB**

Pressed steel swivel castor with a top plate fixing fitted with a black pneumatic tyred steel centred wheel (2 ply) with a roller bearing and total lock brake. Wheel diameter 200mm, tread width 50mm, overall height 236mm, top plate 135mm x 110mm, hole centres 105mm x 80mm. Load capacity 75kg. NB this brake has a leading brake pedal so the brake is away from you when pushing the trolley.



Diameter (mm)	200
Height (mm)	236
Plate Size (mm)	135 x 110
Hole Centres (mm)	105 x 80/75
Bearing Type	Roller
Load Capacity (kg)	75
Fixing Option	Plate
Castor Type	Swivel with Total Lock Brake
Wheel Material	Pneumatic Wheels
Colour / Shore Hardness	Black Pneumatic Tyre on Steel Rims / 2 Ply
Ply Rating	2
Swivel Radius (mm)	157
Top Plate Thickness (mm)	4
To Suit Fixing Bolt (mm)	10
Fork Thickness (mm)	3
Head Dia (mm)	
Temperature Resistance	-10 °C TO +60 °C

## BIL GROUP LTD

Porte Marsh Road, Calne, Wiltshire, SN11 9BW

Registered in England No: 2603821

VAT Reg: GB572705729

