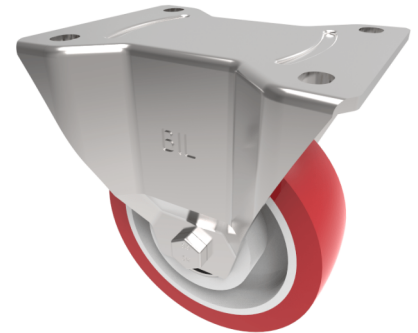


## Polyurethane Nylon Plate Fixed Castor 125mm 350kg Load

**Product code: BZPHF125NPBJ**

Pressed steel fixed castor fitted with a red polyurethane tyre on a white nylon centred wheel, 100mm overall wheel diameter, 40mm tread width, 155mm overall height, 135x110mm top plate with hole centres of 105x80mm and a load capacity of 350kgs. NB due to the fact these are reinforced nylon the white centre is slightly off white.



Diameter (mm)	125
Castor Type	Fixed
Fixing Option	Plate
Height (mm)	155
Wheel Material	Polyurethane on Nylon
Colour / Shore Hardness	Red Polyurethane on Nylon Rim / 96 Shore A
Temperature Resistance	-20 °C TO +70 °C
Bearing Type	Ball
Load Capacity (kg)	350
Tread (mm)	40
Plate Size (mm)	135 x 115
Hole Centres (mm)	105 x 80/75
Top Plate Thickness (mm)	4
Fork Thickness (mm)	4
To Suit Fixing Bolt (mm)	10

## BIL GROUP LTD

Porte Marsh Road, Calne, Wiltshire, SN11 9BW

Registered in England No: 2603821

VAT Reg: GB572705729

