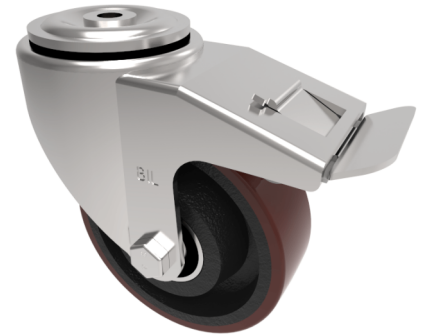


## Polyurethane Cast Iron Bolt Hole Swivel Castor Brake 125mm 400kg Load

**Product code: BZWH125PTBJBH12SWB**

Pressed steel swivel castor with a 12mm bolt hole fitted with a brown polyurethane tyre on a cast iron centred wheel with ball bearings and total lock brake. Wheel diameter 125mm, tread width 50mm, overall height 165mm, Load capacity 400kg.



Diameter (mm)	125
Castor Type	Swivel with Total Lock Brake
Fixing Option	Bolt Hole
Height (mm)	165
Wheel Material	Polyurethane on Cast Iron
Colour / Shore Hardness	Brown Polyurethane on Cast Iron Rim / 94 Shore A
Temperature Resistance	-20 °C TO +80 °C
Bearing Type	Ball
Load Capacity (kg)	400
Tread (mm)	50
Swivel Radius (mm)	137
Head Dia (mm)	76
Fork Thickness (mm)	3.5
To Suit Fixing Bolt (mm)	12

## BIL GROUP LTD

Porte Marsh Road, Calne, Wiltshire, SN11 9BW

Registered in England No: 2603821

VAT Reg: GB572705729

