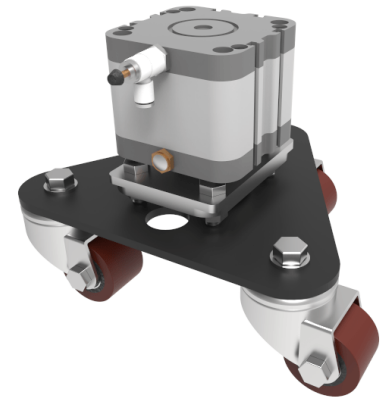


Polyurethane Swivel Castor Ezeelift Lifting System 1000kg Load

Product code: EZK125PTBJ

Ezeelift Pneumatic Lifting System including 4 x 125mm Triple Swivel cylinder skates with polyuerthane on cast iron wheels, Flow controls, Manifold, Operating Switch, Co2 Regulator and 25mtrs of tubing. load capacity 1000kg



Wheel Material	Polyurethane on Cast Iron
Fixing Option	Direct to Cylinder fixing
Castor Type	Swivel
Diameter (mm)	125
Load Capacity (kg)	1000
Bearing Type	Ball
To Suit Fixing Bolt (mm)	10
Height (mm)	286, 311
Tread (mm)	40
Plate Size (mm)	95.5 x 95.5
Colour / Shore Hardness	Brown Polyurethane on Cast Iron Rim / 94 Shore A
Swivel Radius (mm)	228
Temperature Resistance	-20 °C TO +80 °C

BIL GROUP LTD

Porte Marsh Road, Calne, Wiltshire, SN11 9BW

Registered in England No: 2603821

VAT Reg: GB572705729

