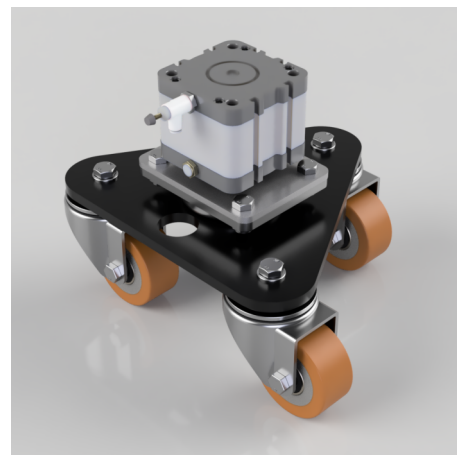


Polyurethane Swivel Castor Ezeelift Lifting System 850kg Load

Product code: EZK80PTBJ

Ezeelift Pneumatic Lifting System including 4 x 50mm Triple Swivel cylinder skates, Flow controls, Manifold, Operating Switch, Co2 Regulator and 25mtrs of tubing. Height retracted 194mm, Height extended 219mm, Load capacity 750kg.



| | |
|--------------------------|--|
| Wheel Material | Polyurethane on Cast Iron |
| Fixing Option | Direct to Cylinder fixing |
| Castor Type | Swivel |
| Diameter (mm) | 80 |
| Load Capacity (kg) | 850 |
| Bearing Type | Ball |
| To Suit Fixing Bolt (mm) | 10 |
| Height (mm) | 242, 267 |
| Tread (mm) | 36 |
| Plate Size (mm) | 95.5 x 95.5 |
| Colour / Shore Hardness | Brown Polyurethane on Cast Iron Rim / 94 Shore A |
| Swivel Radius (mm) | 202 |
| Temperature Resistance | -20 °C TO +80 °C |

BIL GROUP LTD

Porte Marsh Road, Calne, Wiltshire, SN11 9BW

Registered in England No: 2603821

VAT Reg: GB572705729

