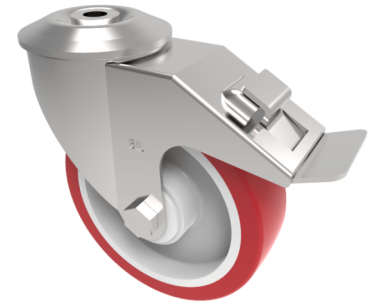


Polyurethane Nylon Bolt Hole Swivel Castor Brake 125mm 200kg Load

Product code: SSMM125NPBBH12SWB

Grade 304 Pressed stainless steel swivel castor with a 12mm bolt hole and total lock brake fitted with a red polyurethane on white nylon centered wheel, with roller bearings, 125mm wheel diameter, 35mm tread width, 155mm overall height, with a load capacity of 200kgs.



Diameter (mm)	125
Fixing Option	Bolt Hole
Castor Type	Swivel with Total Lock Brake
Height (mm)	155
Wheel Material	Polyurethane on Nylon
Colour / Shore Hardness	Red Polyurethane on Nylon Rim / 96 Shore A
Bearing Type	Roller
Tread (mm)	35
Fork Thickness (mm)	2
To Suit Fixing Bolt (mm)	12
Load Capacity (kg)	200
Temperature Resistance	-20 °C TO +70 °C
Head Dia (mm)	76
Swivel Radius (mm)	123

BIL GROUP LTD

Porte Marsh Road, Calne, Wiltshire, SN11 9BW

Registered in England No: 2603821

VAT Reg: GB572705729

