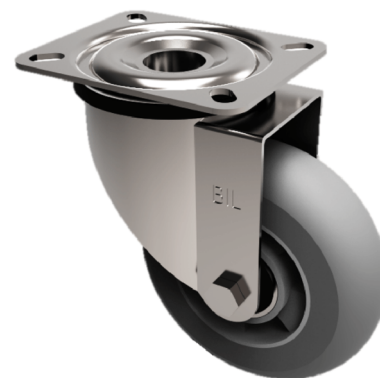


## Grey Soft Elastic Rubber Plate Swivel Castor 160mm 270kg Load

**Product code: SSMM160SRERGBJ**

Grade 304 Pressed stainless steel swivel castor with a top plate fixing fitted with an ergonomic grey high elastic natural 55 shore A round profile rubber tyred aluminium centred wheel with stainless steel ball bearings. Wheel diameter 160mm, tread width 50mm, overall height 195mm, top plate 140mm x 110mm, hole centres 105mm x 80mm. Load capacity 270kg. REACH compliant also PAH-Free rubber to confirm to EU-directive 2005/69/EC, also available with flat tread details on request



Diameter (mm)	160
Fixing Option	Plate
Castor Type	Swivel
Height (mm)	195
Wheel Material	Rubber on Aluminium
Colour / Shore Hardness	Grey Ergonomic Rubber on Aluminium Rim / 55 Shore A
Bearing Type	Ball
Tread (mm)	50
Fork Thickness (mm)	2
To Suit Fixing Bolt (mm)	10
Load Capacity (kg)	300
Temperature Resistance	-30 °C TO +80 °C
Plate Size (mm)	135 x 110
Hole Centres (mm)	105 x 80
Top Plate Thickness (mm)	3
Swivel Radius (mm)	133

## BIL GROUP LTD

Porte Marsh Road, Calne, Wiltshire, SN11 9BW

Registered in England No: 2603821

VAT Reg: GB572705729

