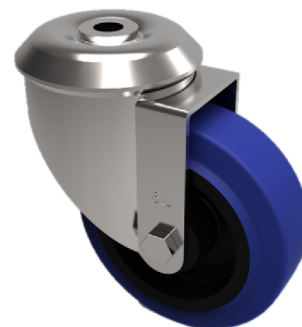


Blue Elastic Rubber 75ShoreA Bolt Hole Swivel Castor 80mm 150kg Load

Product code: SSMM80RNBH12

Grade 304 Pressed stainless steel swivel castor with 12mm bolt hole fixing fitted with a 65 shore A blue elastic rubber tyre on black nylon centred wheel with plain bore. Wheel diameter 80mm, tread width 35mm, overall height 105mm. Load capacity 150kg. REACH compliant also PAH-Free rubber to confirm to EU-directive 2005/69/EC



Diameter (mm)	80
Fixing Option	Bolt Hole
Castor Type	Swivel
Height (mm)	105
Wheel Material	Rubber on Nylon
Colour / Shore Hardness	Blue Rubber on Nylon Rim / 75 Shore A
Bearing Type	Plain
Tread (mm)	35
Fork Thickness (mm)	2
To Suit Fixing Bolt (mm)	12
Load Capacity (kg)	150
Temperature Resistance	-20 °C TO +60 °C
Head Dia (mm)	76
Swivel Radius (mm)	74

BIL GROUP LTD

Porte Marsh Road, Calne, Wiltshire, SN11 9BW

Registered in England No: 2603821

VAT Reg: GB572705729

