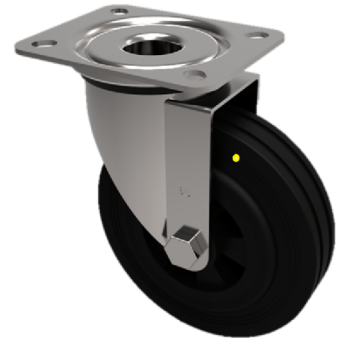


Electrically Conductive Rubber Plate Swivel Castor 80mm 100kg Load

Product code: SSMM80RNBJEC

Grade 304 stainless steel swivel castor with a top plate fixing fitted with a 65 shore A black elastic electrically conductive rubber wheel on a black nylon centre with a ball bearing (NB the ball bearing is not stainless steel). Wheel diameter 80mm, tread width 35mm, overall height 105mm, top plate 105mm x 85mm, hole centres 80mm x 60mm Load capacity 100kg. Conductivity range is 10^3 ohm to 10^4 ohm



Diameter (mm)	80
Fixing Option	Plate
Castor Type	Swivel
Height (mm)	105
Wheel Material	Rubber on Nylon
Colour / Shore Hardness	Black Elastic Rubber on Nylon Rim / 65 Shore A
Bearing Type	Ball
Tread (mm)	35
Fork Thickness (mm)	2
To Suit Fixing Bolt (mm)	8
Load Capacity (kg)	100
Temperature Resistance	-20 °C TO +60 °C
Plate Size (mm)	105 X 85
Hole Centres (mm)	80 X 60
Top Plate Thickness (mm)	2
Swivel Radius (mm)	74

BIL GROUP LTD

Porte Marsh Road, Calne, Wiltshire, SN11 9BW

Registered in England No: 2603821

VAT Reg: GB572705729

